



VEHICLE TYPE

MAN/MERCEDES/BMC PROFESYONEL/FORD CARGO/
CHRYSLER HINO/DODGE/FARGO/HYUNDAI/
ASTRA/IVECO/DAF/DAEWOO/RENAULT/EBRO/
GUY/AVIA/SAURER/SISU/STEYR

TRANSMISSION TYPE

ZF S5/AK/6S-120-111-110-92 GP ZF S5/AK/6S-90-80-70-66-65-55-50-42-36-35 ZF AK 6 80/AK6 90/S6 80/S6 90/
ZF ECOSPLIT 9 S 75 (13,16 / 9,56 / 8,910)(B:252)/ZF ECOSPLIT 9 S 109 (12,91) (B:288) 9 S 1310 TO (9,48) 9 S 1110
TO (9,48 - 12,73 - 8,829) / 16 S 109 (13,31 - 13,41 - 13,43) / 9 S 1115 TO - 9 S 1315 TO (9,480)8 S 109 (11,35) / 16 S 109
(13,30 - 13,42 - 13,04) / ZF 5-90GP, 5S90GP, 5-92GP, 5S92GP, 4-120GP, 4S120GP (B:180) / ZF 5S110GP, 5-110GV,
5-110GPA, 5S150 GP, 5-150 GP5S110GP, 5S111GP, 5-111GP, 5S111GV, 4-150GP (K: 167) / ZF 5-110 GPA, 5S110GPA,
5S111 GPA (U: 235) INTARDER/ZF ECOSPLIT 16 S 151-181-221-251(13,80-13,85 -16,47-16,53-16,41) (B:213) 8 S 151
8 S 1620-16 S 2030-16 S 1930-16 S 2730 / ZF ECOSPLIT 16S130-150-160-190-220(14,29-17,28-17,06-13,80)U (B:215)
16 S 1650 - 8 S 135 - 16 S 1600 (13,68-16,47) 16S 130 - 160 - 190 - 1600 - 1650 - 8S 135 - ZT 1816 (BRAZIL)/ZF ECOSPLIT
16S112(17,28)16K130(14,29)16S130-150-220(17,28)K
16K112-16-112(13,68)-16S220 (B:197)

Kozmaksan ZF Power Take OFFs designed for ZF series main transmissions. Kozmaksan ZF PTOs has Single&Double output models, Rear&Side Mounting type options and available for UNI&ISO mounting housing or suitable for flange connections.

Applications;

- Garbage Truck
- Crane Truck
- Dump Truck

Vehicle Type

ZF

PNEUMATIC

REAR MOUNTING

Transmission Type

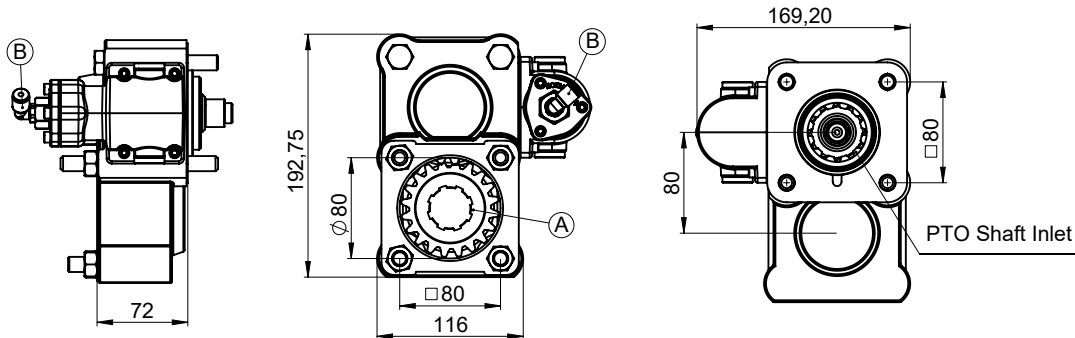
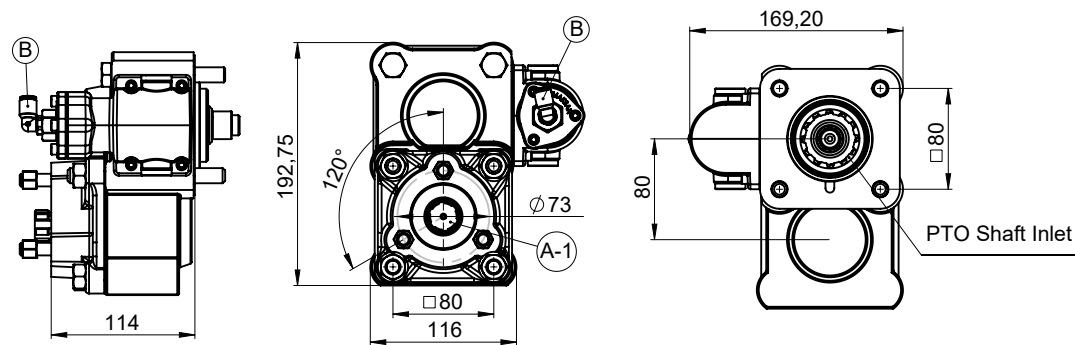
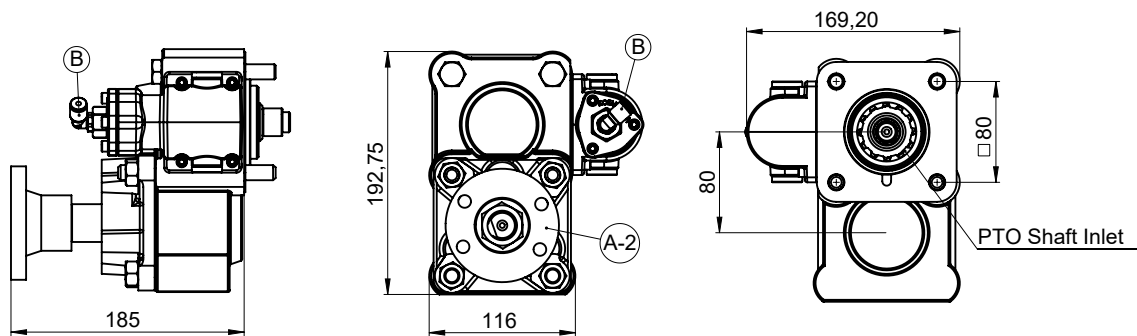
ZF S5/AK/6S-120-111-110-92 GP ZF S5/AK/6S-90-80-70-66-65-55-50-42-36-35 ZF AK 6 80 /AK6 90/S6 80/S6 90/ZF ECOMID 9 S 75 (13,16 / 9,56 / 8,910)(B:252)/ZF ECOMID 9 S 109 (12,91) (B:288) 9 S 1310 TO (9,48) 9 S 1110 TO (9,48 - 12,73 - 8,829) / 16 S 109 (13,31 - 13,41 - 13,43) / 9 S 1115 TO - 9 S 1315 TO (9,480)8 S 109 (11,35) / 16 S 109

ZF.3

Product Code

01 08.02.2019 2/5

Rev. Date

ISO OUTPUT**UNI OUTPUT****FLANGE OUTPUT**

A DIN 5462 / 32x36x8 / ISO 14 4 Bolts Output

B Air Inlet

A-1 DIN 5463 / 6x21x25 / UNI 3 Bolts Output

A-2 ISO 7647-7646 Standard Flange

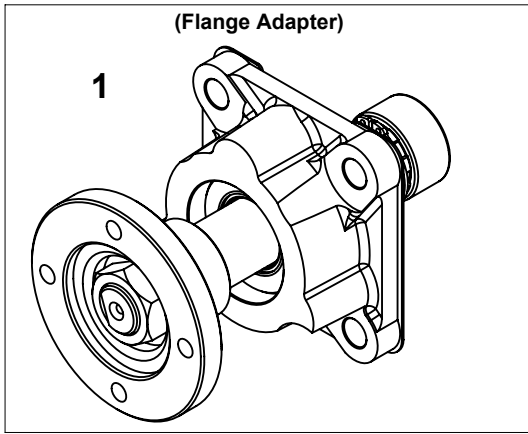
	UNI Output	ISO Output	FLANGE Output
Power(kW)@1000 RPM	23	34,5	34,5
Max. Torque (Nm)	220	330	330
Weight (Kg)	11,5	8,5	14
Ratio	1/1.2		
Mounting Type	Rear Mounting		
Sense of Rotation	CCW		

- Kozmaksan has all rights to change information in this catalogue without announcing it. This document is representing general information. It is not a contract.
 - All information belongs to only PTO/Split Shaft. Do not use PTO/Split Shaft, if it is not suitable for your engine and main transmission.
 - Pumps, shafts and other parts should not be longer or heavier than approved distance and weight by the manufacturer of main transmission and engine.

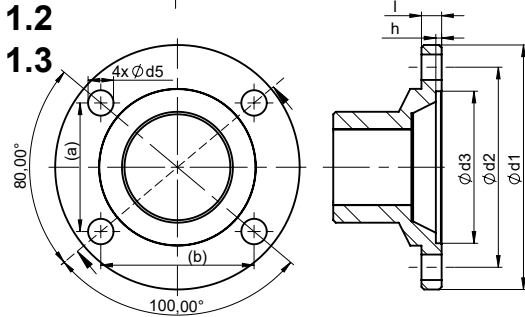
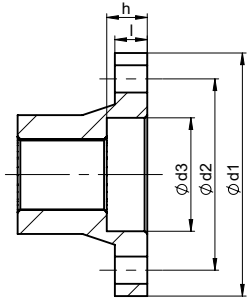
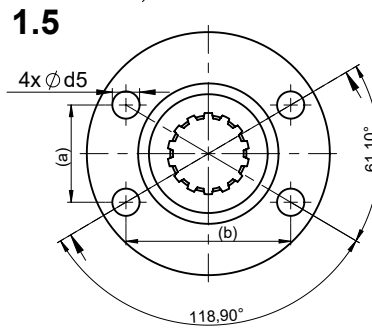
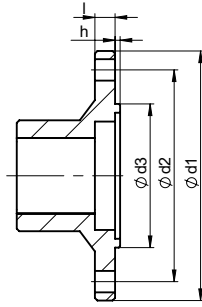
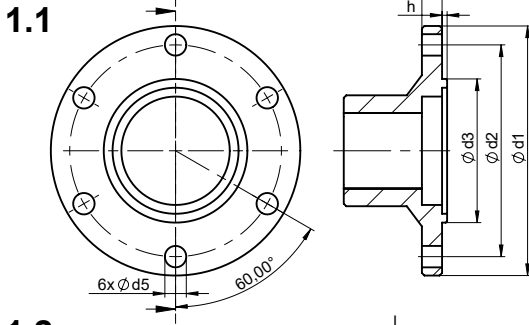
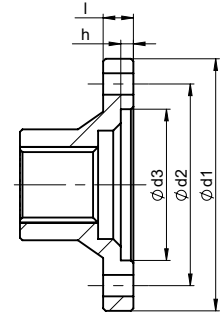
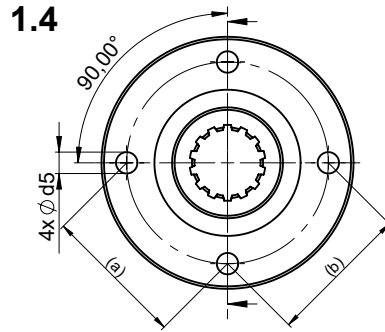
KozmaksanPTO

kozmaksanpto

kozmaksan-hydraulics-pt



ZF.3			Product Code
01	08.02.2019	3/5	Rev. Date



	Ød1	Ød2	Ød3	Ød5	l	h	Hole	(a) x (b)
1.1	100	84	57	8,1	8	2,3	6	-
1.2	97	79,37	60,32	10,1	8	2,3	4	51 x 60,8
1.3	87	69,85	57,10	8,1	2	2	4	45 x 53,5
1.4	100	80	60	8,5	12	5	4	56,5 x 56,5
1.5	90	70,83	42	10,1	12	15	4	36 x 61

Dimension are mm.

No	Code	Description			
1	KIT.55.03.UF	Flange Adapter			
1.1	C06-076	ISO 7646-100x6x8			
1.2	C06-045	ISO 7647-SAE 1300x4x10			
1.3	C06-082	ISO 7647 - SAE 1100x4x8			
1.4	C06-194	Ø100 Flange			
1.5	C06-192	Ø90 Flange			

- Kozmaksan has all rights to change information in this catalogue without announcing it. This document is representing general information. It is not a contract.
 - All information belongs to only PTO/Split Shaft. Do not use PTO/Split Shaft, if it is not suitable for your engine and main transmission.
 - Pumps, shafts and other parts should not be longer or heavier than approved distance and weight by the manufacturer of main transmission and engine.

KozmaksanPTO

kozmaksanpto

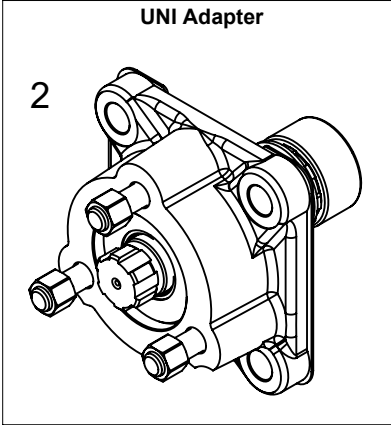
kozmaksan-hydraulics-pt



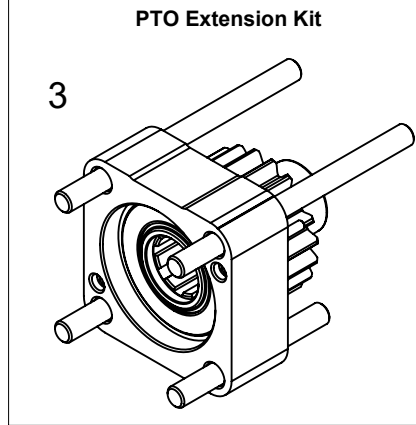
1.OSB. Erkunt Cad. No: 6 Sincan / ANKARA
 Tel.+90 312 267 39 71-Fax +90 312 267 38 72
 order@kozmaksan.com.tr
 www.kozmaksan.com.tr



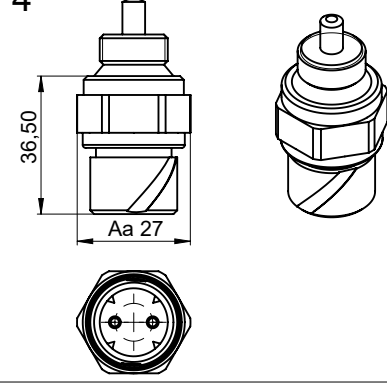
UNI Adapter



PTO Extension Kit



4



No	Code	Description	No	Code	Description
2	KIT.52.02.KF	UNI Adapter			
3	KIT.1.ISO	PTO Extension Kit			
4	T12-001	Engage/Disengage Sensor			

- Kozmaksan has all rights to change information in this catalogue without announcing it. This document is representing general information. It is not a contract.
 - All information belongs to only PTO/Split Shaft. Do not use PTO/Split Shaft, if it is not suitable for your engine and main transmission.
 - Pumps, shafts and other parts should not be longer or heavier than approved distance and weight by the manufacturer of main transmission and engine.

KozmaksanPTO



kozmaksanpto



kozmaksan-hydraulics-pto



ZF.3

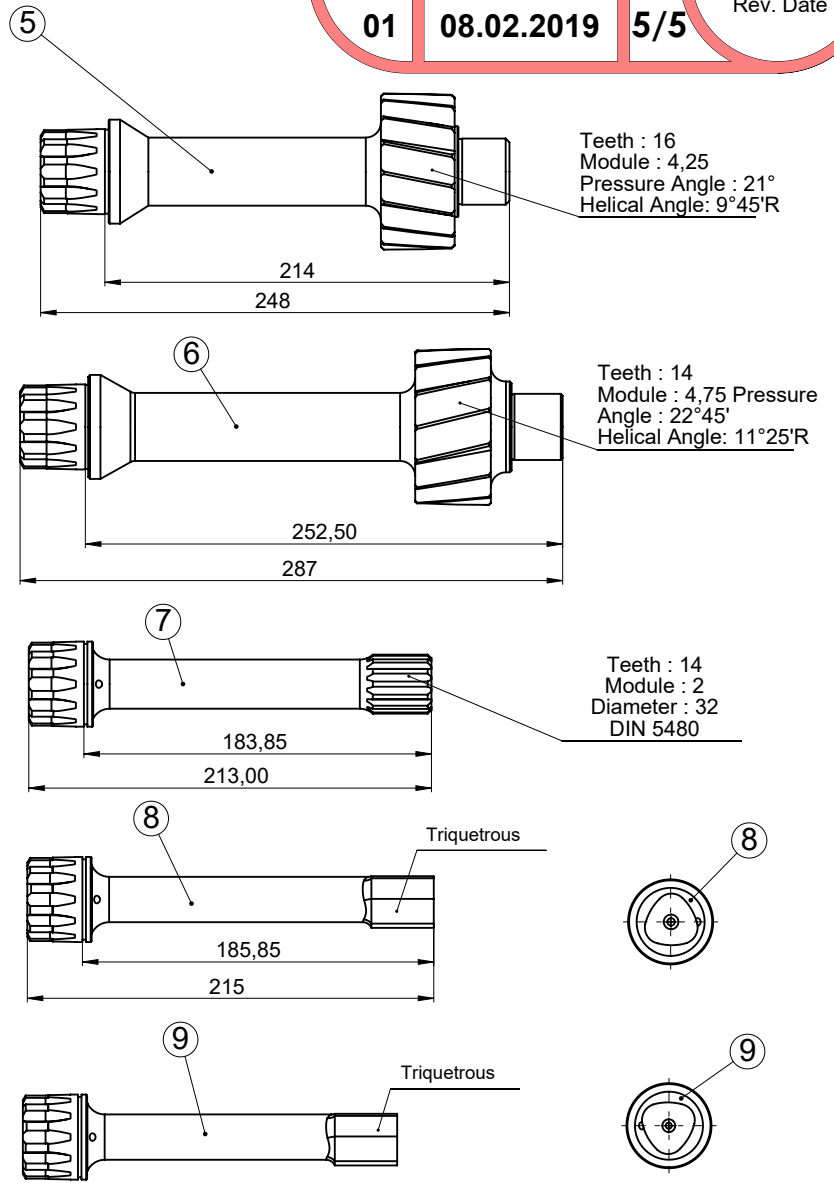
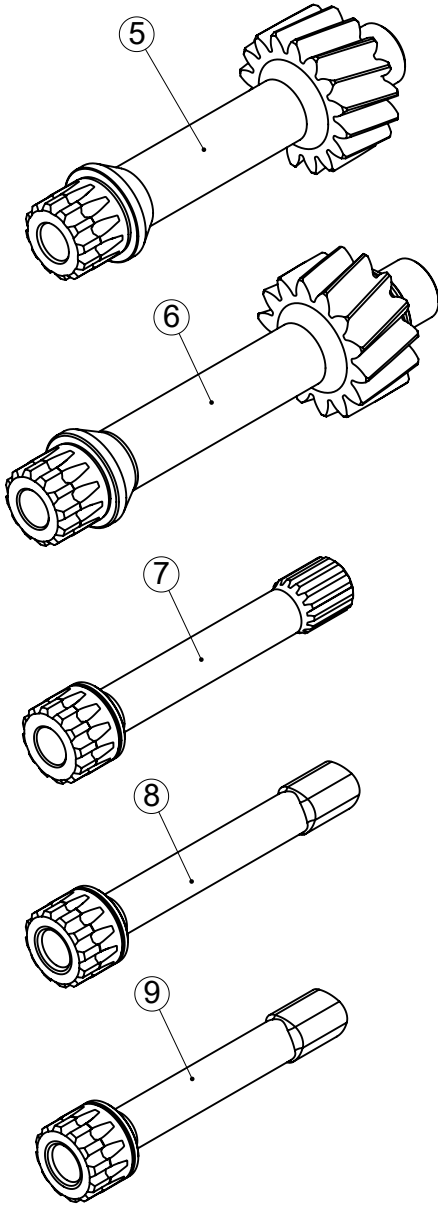
Product Code

01

08.02.2019

5/5

Rev. Date



No	Code	Description	No	Code	Description
5	KML-9S75	PTO 9S75 (13.16) PTO Shaft			
6	KML-9S10991	9S109(12.91)/16S109(13.41) PTO Shaft			
7	KML-16S151	16S151 PTO Shaft			
8	KML-16S130U	16S130 PTO Shaft 215 mm			
9	KML-16S130K	16S130 PTO Shaft			

- Kozmaksan has all rights to change information in this catalogue without announcing it. This document is representing general information. It is not a contract.
- All information belongs to only PTO/Split Shaft. Do not use PTO/Split Shaft, if it is not suitable for your engine and main transmission.
- Pumps, shafts and other parts should not be longer or heavier than approved distance and weight by the manufacturer of main transmission and engine.

KozmaksanPTO

kozmaksanpto

kozmaksan-hydraulics-pt